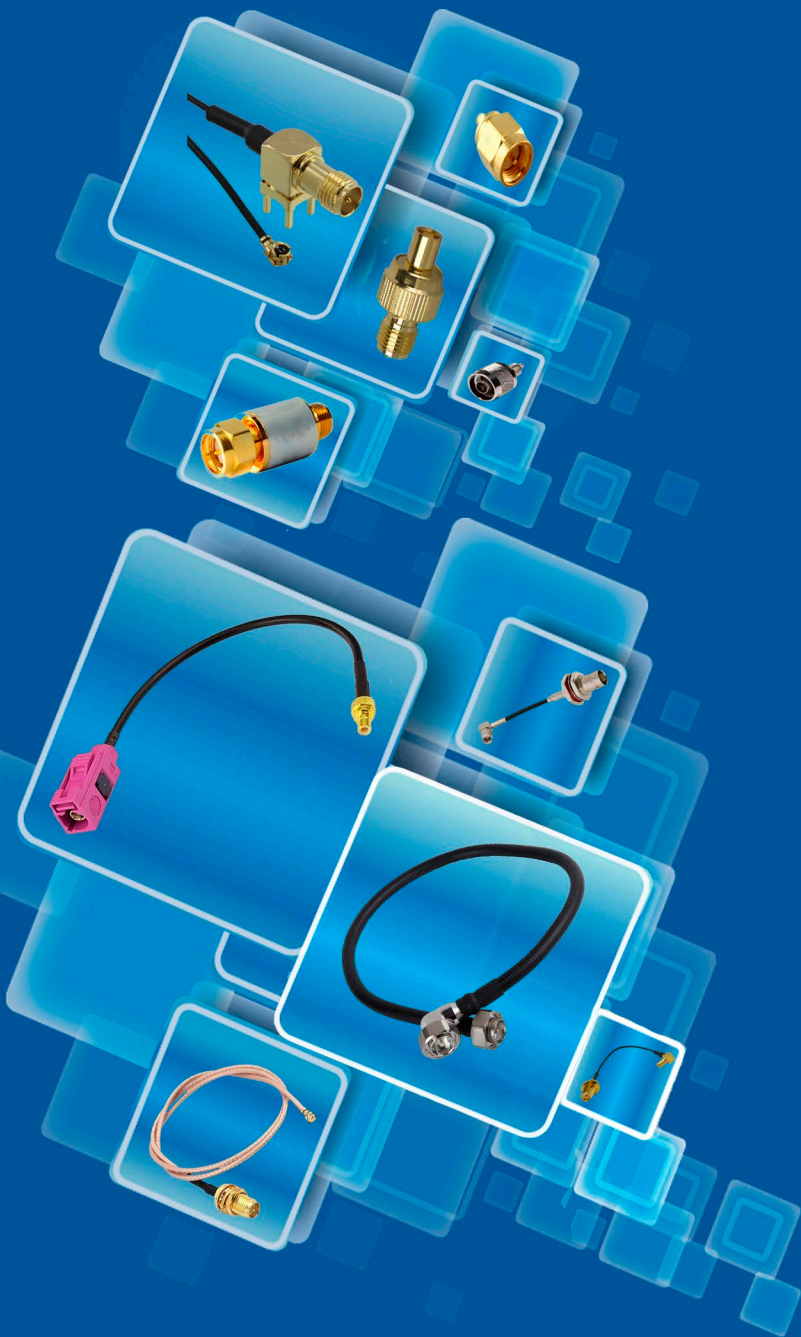




RF CABLE ASSEMBLIES RF CONNECTORS



## RF CABLE ASSEMBLIES RF CONNECTORS

- Adaptors
- Attenuators
- RF Connectors
- RF Cable Assemblies
  
- Flexible Low Loss Cable Assemblies
- Fakra Cable Assemblies
- Overmolded Cable Assemblies
- Customized Cable Assemblies

# RF CONNECTORS

Impedance: 50 Ω or 75 Ω

## MCX STRAIGHT JACK FOR PCB RECEPTACLE

### Series RCN4



Frequency Range: 0 to 6 GHz  
Working Voltage, max: RG178= 250 Vrms  
RG174/316= 335 Vrms

## MMCX STRAIGHT JACK FOR PCB RECEPTACLE

### Series RCN5



Frequency Range: 0 to 6 GHz  
Working Voltage, max: RG178= 250 Vrms  
RG174/316= 335 Vrms

## SMP

### Series RCN33



Frequency Range: 0 to 26.5 GHz  
(extended performance to 40 GHz)  
Working Voltage, max: 500 Vrms

## BNC

### Series RCN3



Frequency Range: 0 to 4 GHz  
Working Voltage, max: RG178= 170 Vrms  
RG174/316=250 Vrms

## TNC

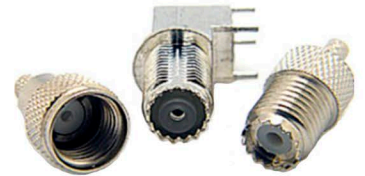
### Series RCN9



Frequency Range: 0 to 11 GHz  
Working Voltage, max: RG178= 170 Vrms  
RG174/316=250 Vrms

## Mini UHF

### Series RCN7



Frequency Range: 0 to 2.5 GHz  
Working Voltage, max: 170 Vrms

## SMA

### Series RCN1



Frequency Range: 0 to 12.4 GHz  
Working Voltage, max: RG178= 170 Vrms  
RG174/316= 250 Vrms

## SMC

### Series RCN8



Frequency Range: 0 to 10 GHz  
Working Voltage, max: RG178= 250 Vrms  
RG174/316= 335 Vrms

## SMB

### Series RCN2



Frequency Range: 0 to 4 GHz  
Working Voltage, max: RG178= 250 Vrms  
RG174/316= 335 Vrms



# ADAPTERS

www.raltron.com

**SMA FEMALE to MCX MALE**

**Series RAD41**



Frequency Range: DC to 6 GHz  
Impedance: 50  $\Omega$   
VSWR, max: 1.2

**TNC MALE to MCX FEMALE**

**Series RAD42**



Frequency Range: DC to 6 GHz  
Impedance: 50  $\Omega$

**SMA MALE to MCX FEMALE**

**Series RAD41**



Frequency Range: DC to 6 GHz  
Impedance: 50  $\Omega$   
VSWR, max: 1.2

**SMA MALE to MCX MALE**

**Series RAD41**



Frequency Range: DC to 6 GHz  
Impedance: 50  $\Omega$   
VSWR, max: 1.3

**MCX PLUG to TNC JACK**

**Series RAD42**



Frequency Range: DC to 6 GHz  
Impedance: 50  $\Omega$

**SMA FEMALE to MCX FEMALE**

**Series RAD41**



Frequency Range: DC to 6 GHz  
Impedance: 50  $\Omega$   
VSWR, max: 1.3

# ATTENUATORS

Frequency Range: 0 to 6 GHz  
Impedance: 50  $\Omega$   
Attenuations Accuracy: +0.5 / -0.2 dB  
VSWR, max: 1.3  
Operating Temperature : -40°C ~ +85°C

**SMA MALE to SMA FEMALE**

**Series RAT01**



Nominal Attenuation: 1 dB  
Input Power Rating (Average): 6 W

**SMA MALE to SMA FEMALE**

**Series RAT06**



Nominal Attenuation: 6 dB  
Input Power Rating (Average): 0.6 W

**SMA MALE to SMA FEMALE**

**Series RAT40**



Nominal Attenuation: 40 dB  
Input Power Rating (Average): 0.5 W

## TNC-FLEXIBLE-LOW LOSS Type N-FLEXIBLE-LOW LOSS COAXIAL CABLE

### Series RCB9

Combination: MCX  
MMCX  
SMA  
TNC  
Type N



Impedance: 50  $\Omega$   
Frequency Range: DC to 6 GHz  
VSWR, max: 1.5  
Insertion Loss: 1.8 dB  
Insulation Resistance, min: 5000 M $\Omega$   
Power Handling: 2 W  
Operating Temperature: -40°C ~ +85°C

## Type N-FLEXIBLE-LOW LOSS COAXIAL CABLE

### Series RCB17

Combination: BNC  
MCX  
MMCX  
SMA  
Type N



Impedance: 50  $\Omega$   
Frequency Range: DC to 6 GHz  
VSWR, max: 1.5  
Insertion Loss: 1.8 dB  
Insulation Resistance, min: 5000 M $\Omega$   
Power Handling: 2 W  
Operating Temperature: -40°C ~ +85°C

## BNC-FLEXIBLE-LOW LOSS COAXIAL CABLE

### Series RCB3

Combination: BNC  
TNC  
Type F  
Type N



Impedance: 50  $\Omega$  - 75  $\Omega$   
Frequency Range: DC to 6 GHz  
VSWR, max: 1.5  
Insertion Loss: 1.8 dB  
Insulation Resistance, min: 5000 M $\Omega$   
Power Handling: 2 W  
Operating Temperature: -40°C ~ +85°C

## MMCX-FLEXIBLE-LOW LOSS COAXIAL CABLE

### Series RCB5

Combination: BNC  
MMCX  
SMA  
IPEX



Impedance: 50  $\Omega$   
Frequency Range: DC to 6 GHz  
VSWR, max: 1.5  
Insertion Loss: 1.8 dB  
Insulation Resistance, min: 5000 M $\Omega$   
Power Handling: 2 W  
Operating Temperature: -40°C ~ +85°C

## MCX-FLEXIBLE-LOW LOSS COAXIAL CABLE

### Series RCB2

Combination: MCX  
SMA



Impedance: 50  $\Omega$   
Frequency Range: DC to 6 GHz  
VSWR, max: 1.5  
Insertion Loss: 1.8 dB  
Insulation Resistance, min: 5000 M $\Omega$   
Power Handling: 2 W  
Operating Temperature: -40°C ~ +85°C

## SMA-FLEXIBLE-LOW LOSS COAXIAL CABLE

### Series RCB1

Combination: BNC  
Trimmed Lead  
SMA  
SMB  
SMC  
FAKRA  
IPEX



Impedance: 50  $\Omega$   
Frequency Range: DC to 6 GHz  
VSWR, max: 1.5  
Insertion Loss: 1.8 dB  
Insulation Resistance, min: 5000 M $\Omega$   
Power Handling: 2 W  
Operating Temperature: -40°C ~ +85°C



## SMC-FLEXIBLE-LOW LOSS COAXIAL CABLE

### Series RCB8

Combination: BNC  
TNC



Impedance: 50  $\Omega$   
 Frequency Range: DC to 6 GHz  
 VSWR, max: 1.5  
 Insertion Loss: 1.8 dB  
 Insulation Resistance, min: 5000 M $\Omega$   
 Power Handling: 2 W  
 Operating Temperature: -40°C ~ +85°C

## Type F-FLEXIBLE-LOW LOSS COAXIAL CABLE

### Series RCB17

Combination: Type F  
Type N  
BNC  
FAKRA



Impedance: 75  $\Omega$   
 Frequency Range: DC to 6 GHz  
 VSWR, max: 1.5  
 Insertion Loss: 1.8 dB  
 Insulation Resistance, min: 5000 M $\Omega$   
 Power Handling: 2 W  
 Operating Temperature: -40°C ~ +85°C

## IPEX -FLEXIBLE-LOW LOSS COAXIAL CABLE

### Series RCBO

Combination: IPEX  
SMA Female Bulkhead  
IPEX Plug to Reverse  
Type N  
SMA



Impedance: 50  $\Omega$   
 Frequency Range: DC to 6 GHz  
 VSWR, max: 1.5  
 Insertion Loss: 1.8 dB  
 Insulation Resistance, min: 5000 M $\Omega$   
 Power Handling: 2 W  
 Operating Temperature: -40°C ~ +85°C

## FME-FLEXIBLE-LOW LOSS COAXIAL CABLE

### Series RCB6

Combination: BNC  
FME  
TNC



Impedance: 50  $\Omega$   
 Frequency Range: DC to 6 GHz  
 VSWR, max: 1.5  
 Insertion Loss: 1.8 dB  
 Insulation Resistance, min: 5000 M $\Omega$   
 Power Handling: 2 W  
 Operating Temperature: -40°C ~ +85°C

## SMB-FLEXIBLE-LOW LOSS COAXIAL CABLE

### Series RCB2

Combination: SMB  
SMA  
MMCX



Impedance: 50  $\Omega$   
 Frequency Range: DC to 6 GHz  
 Operating Temperature: -40°C ~ +85°C

## DIN-FLEXIBLE-LOW LOSS COAXIAL CABLE

### Series RCB35

Combination: DIN  
SMA



Impedance: 50  $\Omega$   
 Frequency Range: DC to 14 GHz  
 VSWR, max: 1.3  
 Insulation Resistance, min: 10000M $\Omega$   
 Operating Temperature: -55°C ~ +155°C

## Series RCB46



RF Coaxial Cable, Fakra C Code Male, HRS GT5-1S Female, RG174.

## Series RCB49



RF Coaxial Cable, Fakra H Code Female, SMB Female, RG174.

## Series RCB48



RF Coaxial Cable, Fakra C Straight Female, Fakra Z Straight Male, RG174.

## Series RCB48



RF Coaxial Cable, Fakra Z Straight Female, Fakra Z Straight Female, RG174.

## Series RCB18



RF Coaxial Cable, Fakra Z Male SMA Male, RG174.

## Series RCB48



RF Coaxial Cable, Fakra Z Straight Male, Fakra Z Code Straight Female, RG174.

## Series RCB50



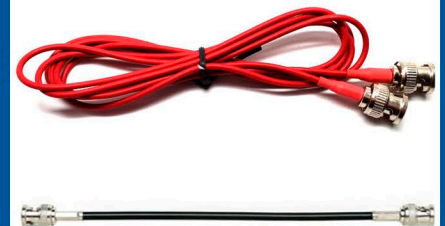
PIM Cable Assembly With <math>< 160\text{dBc}</math> .250" Corrugated Cable.

## Series RCB50



50 $\Omega$  Super Flexible High-Performance PIM Cable Assembly.

## Series RCB36



RG59 Coaxial Patch cables are premade with BNC connector ends already attached.



## Series RCBM



Custom Overmolded  
RF Cable Assemblies.

## Series RCBM



Custom Overmolded  
RF Cable Assemblies.

## Series RCBH



High Performance Microwave  
Cable Assemblies.

## Series RCB54



Custom Coaxial Cable Assemblies.

## Series RCB54



Custom Coaxial Cable Assemblies.

## Series RCB54



Custom Coaxial Cable Assemblies.

## Series RCBP



PAL Male Cable Assembly with IPEX  
Pigtail.

## Series RCBP



PAL Male to Customized Cable  
Connector for RG178.

## Series RCBP



Nickel-Plated PAL Male to PAL Male  
Cable for PAL System Antenna.



**RF CABLE ASSEMBLIES  
RF CONNECTORS  
ADAPTERS  
ATTENUATORS**

## **RAMI TECHNOLOGY GROUP**

### **RALTRON ELECTRONICS IS A MEMBER OF RAMI TECHNOLOGY GROUP**

With worldwide operations controlled from its main business center in Miami, Florida, RAMI TECHNOLOGY GROUP is one of the fastest growing manufacturers of frequency components and IoT related passive components and antennas. Founded in 1983, the company offers one of the broadest lines of quartz crystals and crystal based products from simple resonators to precision oscillators such as VCXO, TCXO and OCXO. The second line of business consists of passive components and a complete portfolio of antennas for IoT related wireless applications including SAW Filters, LTCC Low-Pass and Band-Pass Filters, Duplexers and Baluns as well as Chip Antennas, Patch Antennas (passive and active), Helix Antennas, Dipole and Stub Antennas, etc. The antenna line is now completed by an ample offering of RF Cable Assemblies and RF Connectors, Adapters and Attenuators. RAMI TECHNOLOGY is interacting with its global customer base through direct sales offices, Reps and Distributors. Full technical support is offered with two application engineering teams and failure analysis labs based in Miami, Florida and Shenzhen, China. The company's production sites are located in Asia and Miami, Florida.

RAMI TECHNOLOGY GROUP is committed to excellence in its interaction with customers, suppliers, employees and the communities where it is operating.

## **Worldwide Facilities**

**RALTRON ELECTRONICS**  
RAMI TECHNOLOGY USA, LLC  
10400 NW 33rd Street Suite 290  
Miami, Florida 33172 USA  
Tel: +1-305-593-6033  
Fax: +1-305-594-3973  
E-mail: sales@raltron.com  
E-mail: sales@ramitechnology.com

**RAMI TECHNOLOGY (S) PTE, LTD**  
Block 1003 Bukit Merah Central,  
#04-20 Technopreneur Centre,  
Singapore 159836  
Tel: +65-65130280  
Fax: +65-62748826  
E-mail: sales@ramitechnology.com

**RAMI TECHNOLOGY Taiwan**  
6-3F, 159 Yang Ming Road  
Kaohsiung  
Taiwan, ROC  
Tel: +886 958 015 505  
Fax: +852-2793-1901  
E-mail: sales@ramitechnology.com

**RAMI TECHNOLOGY Hong Kong Limited**  
Flat C1, 11/F  
Hoi Bun Industrial Building  
6 Wing Yip Street Kwun Tong  
Kowloon, Hong Kong  
Tel: +852-2793-1111  
Fax: +852-2793-1901  
E-mail: sales@ramitechnology.com

**RAMI TECHNOLOGY Shenzhen**  
Room 402A, Technology Building  
DouLi Industrial Park  
No 105 MeiHua Road, Futian District  
Shenzhen, China  
Tel: +86 755 21537033  
Fax: +86 75521537933  
E-mail: sales@ramitechnology.com

**RAMI TECHNOLOGY India**  
Block 1003 Bukit Merah Central,  
#04-20 Technopreneur Centre,  
Singapore 159836  
Mobile: +91-9650768484  
Tel: +65-65130280  
Fax: +65-62748826  
E-mail: sales@ramitechnology.com